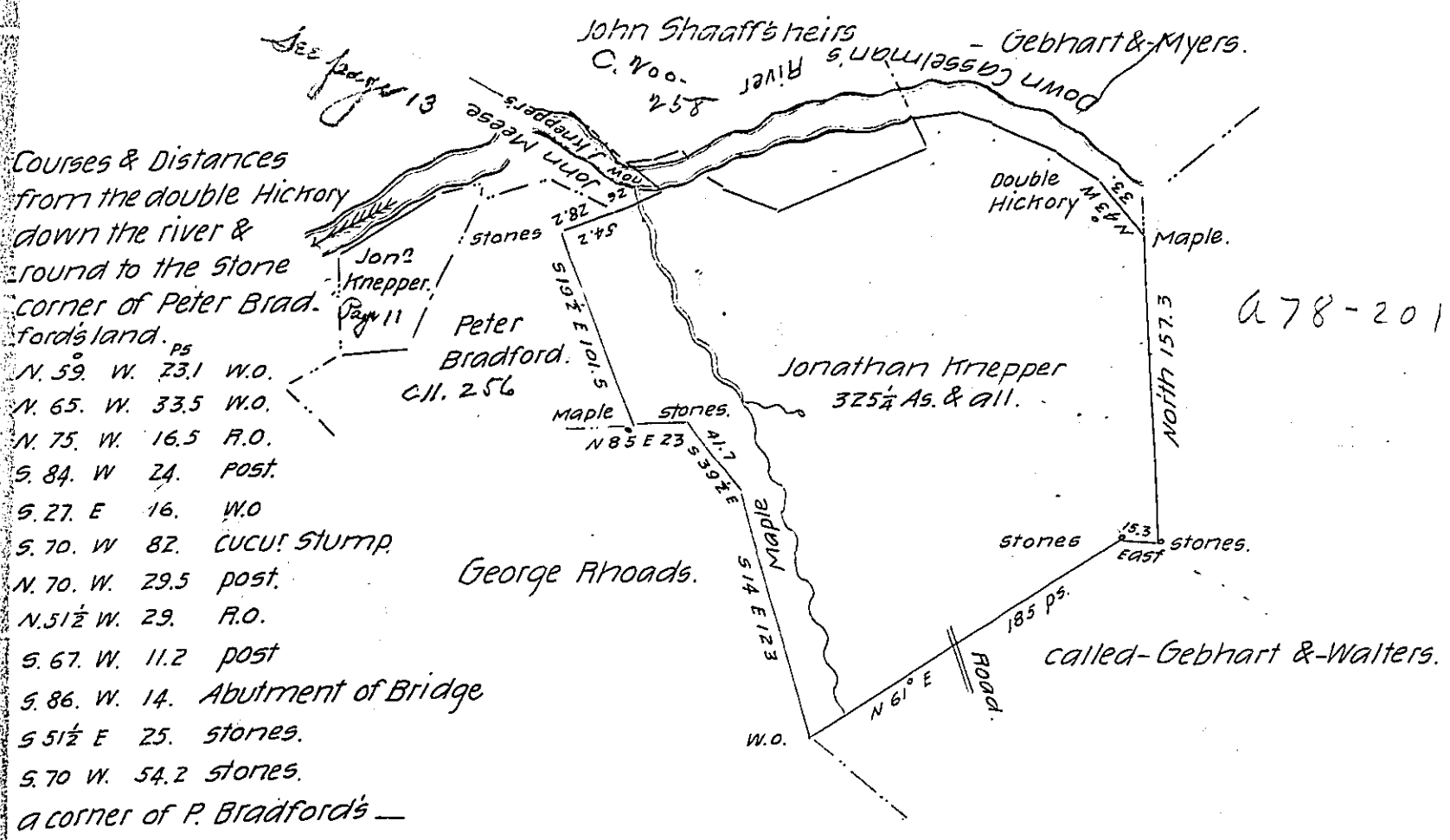


See page 11



Courses & Distances
 from the double Hickory
 down the river &
 round to the stone
 corner of Peter Brad-
 ford's land.

N. 59. W. 73.1 W.O.
 N. 65. W. 33.5 W.O.
 N. 75. W. 16.5 R.O.
 S. 84. W. 24. Post.
 S. 27. E. 16. W.O.
 S. 70. W. 82. CUCU! Stump.
 N. 70. W. 29.5 post.
 N. 51 1/2 W. 29. R.O.
 S. 67. W. 11.2 post
 S. 86. W. 14. Abutment of Bridge
 S 51 1/2 E 25. stones.
 S. 70 W. 54.2 stones.
 a corner of P. Bradford's —

Situate on Casselman's river, in Milford Township, Somerset County;
 and, (having been previously surveyed by John Witt Esq.) now returned
 the 5th day of February 1839, in pursuance of a Warrant for 3009, dated
 the 16th of April 1838

Pf. Bernard Connelly Jr. D.S.

To John Taylor Esq. S.G.

Som't Co.

IN TESTIMONY that the above is a copy of the original remaining on file in
 the Department of Internal Affairs of Pennsylvania, made
 conformably to an Act of Assembly approved the 16th day of
 February, 1833, I have hereunto set my Hand and caused
 the Seal of said Department to be affixed at Harrisburg,
 this twenty-ninth day of June 1905.

Looe R. Brown
 Secretary of Internal Affairs.